

prints

A GUIDE

anna munro art

materials

We offer two types of prints: **cotton rag paper and canvas**

CANVAS

Made from a blend of 65% polyester and 35% cotton, this canvas features a high-resolution coating that is flexible enough to withstand stretching without sagging. It has a subtle texture and a low-sheen satin finish for a painterly, artistic feel.



WHEN TO CHOOSE CANVAS

Canvas prints are printed directly onto artist canvas and stretched over a wooden frame. The texture of the canvas gives the artwork a more painterly, tactile feel, closer to an original painting.

They can be displayed without glass, which reduces glare and gives the artwork a **softer**, more **relaxed** presence on the wall.

Canvas prints often suit **larger statement pieces and more casual interior styles.**



Canvas

PAPER

Made from 100% cotton using a cold-press process, this paper has a textured matte finish with no optical brighteners. It offers excellent longevity, with a lightfast rating of over 100 years



WHEN TO CHOOSE PAPER

Paper prints are designed to be framed behind glass, which protects the artwork and gives a clean, polished presentation. Framing also allows you to customise the look with different frame styles and mat boards.

Paper prints tend to feel a little more **refined and traditional**, making them a great option if you like gallery-style presentation.



Paper

Please note : our prints are shipped **unstretched and unframed**, above show the final result after framing

production

The nitty gritty

WHAT WILL ARRIVE?

All prints are made to order through our trusted printing partners to ensure the highest quality reproduction. They are shipped **unstretched and unframed**, rolled in a protective tube.

Production time

Please allow 2-3 weeks for your print to be produced before shipping. Each piece is carefully printed and inspected to ensure colour accuracy and quality.

Care Instructions

- Unroll your print gently and allow it to relax flat before framing or stretching.
- Handle with clean hands and avoid touching the printed surface where possible.
- Keep the print away from direct sunlight, moisture, and extreme heat to maintain its longevity.
- Paper prints should be framed behind glass for protection.
- Canvas prints should be stretched by a professional framer or print shop before hanging.

WHY DON'T WE SELL FRAMED PRINTS?

Framing prints before shipping makes the packages much larger and more fragile, which increases shipping costs significantly. For this reason, all prints are shipped unframed. This keeps shipping safer and more affordable, while allowing you to choose framing that suits your space.

If you'd like a framed look, high-quality floating frames are widely available from local framers and home stores at a much lower cost. This also allows you to choose a frame style that best suits your space. Much more choice, much higher quality.



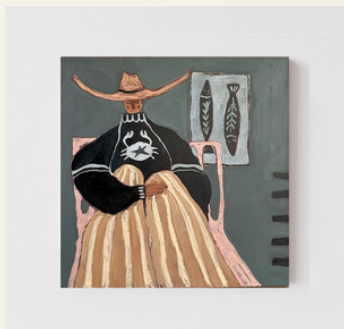
framing

The final touch

FRAMING CANVAS

Canvas prints are stretched over a wooden frame, which allows them to be hung directly on the wall without additional framing.

Some people also choose to add a floating frame, which sits slightly away from the canvas edge and creates a subtle shadow gap. Both options are shown below:



Canvas stretched



Canvas stretched + float frame

WHO TO USE?

Here are some useful links to framers I know are able to stretch and frame your canvas.

Professionals:

- Fantastic Framing - handy quote calculator [online here](#)
- The [Framing Project](#) - My favourite framers in Sydney!
- Any local framers will do an amazing job

DIY:

This one is a bit tricky, it involves tools and a bit of practice, but a great skill to have if you have some time. Here is a super hand tutorial to follow:

- [How to stretch a canvas](#)

prints

framing

The final touch

FRAMING PAPER

Paper prints are typically framed behind glass to protect the artwork.

Common options include:

- Standard frame – the print sits directly in the frame behind glass.
- Framed with a mat (mount) – a border around the artwork that adds space and a gallery-style look.
- Floating frame – the artwork appears to “float” within the frame with a small gap around it.

Framing paper prints gives you flexibility to match your interior style, from minimal modern frames to classic wood finishes.

All prints will come with a white order. See the next page for border sizes



Standard frame



Framed with mount



Floating frame

WHO TO USE?

Standard frame : This one can be a bit more DIY! You can buy a frame online and simply place the print inside. Some good frames

- [Ikea](#)
- [Art photo limited](#) - Good for the rectangle ones
- [Custom Sizes](#) - Made to fit exactly

Frame with Mount:

- [Standard Mounts](#)
- [Custom mounts/matboards](#): This is really handy for the rectangle pieces as sometimes it's hard to find a frame that matches them. You can buy a cheaper frame with slightly too large measurements and create a custom mount to fit the piece perfectly. Here is a handy [video](#) to watch on mounting your print.

Float Mounts:

Take to any local framer and they will have lots of options!

Borders

Borders

PAPER - BORDERS

Paper Size (cm)	Print Size	Border (cm)
30 x 40	29 x 37	1 x 2
40 x 40	38 x 38	1 x 1
50 x 50	44 x 44	3 x 3
45 x 60	41.5 x 56	1.75 x 2
60 x 60	54 x 54	3 x 3
70 x 70	60 x 60	5 x 5
60 x 80	56 x 75	2 x 2.5
80 x 80	70 x 70	5 x 5
76 x 100	70 x 93	3 x 3.5
90 x 90	80 x 80	5 x 5

*Borders may change slightly depending on the ratio of the original painting. This is more of a rough guide

SQUARE

RECTANGLE



Large Print



Small Print



Large Print



Small Print

Borders may change slightly depending on the ratio of the original painting

CANVAS BORDERS

All canvas prints come with a 5cm border to allow for stretching around standard 3.8 or 1.9cm timber stretchers

prints

limited editions

The special ones

LIMITED EDITIONS VS OPEN EDITIONS

LIMITED EDITIONS

Some prints are released as limited editions, meaning only a fixed number will ever be produced. Once the edition sells out, no more prints of that artwork will be made in that size and format. **All prints are released as limited editions of 20 per size.**

When an edition reaches its limit, it is permanently retired.

Each limited edition print is individually numbered and comes with a signed certificate of authenticity, confirming its place within the edition.

OPEN EDITIONS

There is no fixed limit to how many prints can be produced meaning a **more accessible and affordable** print, while still maintaining the same high-quality printing and materials.

Unlike limited editions, open edition prints are not numbered, but they are produced with the **same care and attention to detail.**



prints