

# prints

**A GUIDE**

anna munro art

# materials

We offer two types of prints: **cotton rag paper and canvas**

## CANVAS

Made from a blend of 65% polyester and 35% cotton, this canvas features a high-resolution coating that is flexible enough to withstand stretching without sagging. It has a subtle texture and a low-sheen satin finish for a painterly, artistic feel.



### WHEN TO CHOOSE CANVAS

Canvas prints are printed directly onto artist canvas and stretched over a wooden frame. The texture of the canvas gives the artwork a more painterly, tactile feel, closer to an original painting.

They can be displayed without glass, which reduces glare and gives the artwork a **softer**, more **relaxed** presence on the wall.

Canvas prints often suit **larger statement pieces and more casual interior styles.**



Canvas

## PAPER

Made from 100% cotton using a cold-press process, this paper has a textured matte finish with no optical brighteners. It offers excellent longevity, with a lightfast rating of over 100 years



### WHEN TO CHOOSE PAPER

Paper prints are designed to be framed behind glass, which protects the artwork and gives a clean, polished presentation. Framing also allows you to customise the look with different frame styles and mat boards.

Paper prints tend to feel a little more **refined and traditional**, making them a great option if you like gallery-style presentation.



Paper

**Please note** : our prints are shipped **unstretched and unframed**, above show the final result after framing

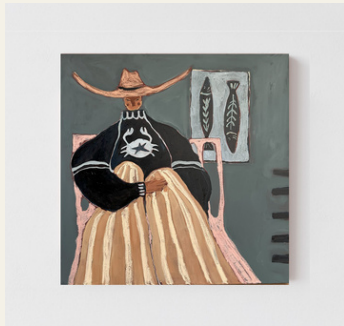
# Canvas

Buying Options

## FRAMED CANVAS

Canvas prints are stretched over a wooden frame, and a floating frame is added. This which sits slightly away from the canvas edge and creates a subtle shadow gap.

Below shows canvas stretched and framed or stretched unframed:



Canvas stretched



Canvas stretched + float frame

## OPTIONS

Prints can be framed in Oak or Walnut frames, the default frame will be Oak. To select walnut please add a note to your order.



OAK FRAME



WALNUT FRAME

# Canvas

Buying Options

## UNFRAMED CANVAS

Canvas prints can also be purchased unstretched rolled in a protective tube. A 5cm border is added to allow for stretching.

These prints can then be taken to a framer and stretched and framed for more bespoke options. This is usually overall more expensive.

**International orders will be shipped unstretched.**

## WHO TO USE

Here are some useful links to framers I know are able to stretch and frame your canvas.

Professionals:

- Fantastic Framing - handy quote calculator [online here](#)
- The [Framing Project](#) - My favourite framers in Sydney!
- Any local framers will do an amazing job

DIY:

This one is a bit tricky, it involves tools and a bit of practice, but a great skill to have if you have some time. Here is a super hand tutorial to follow:

- [How to stretch a canvas](#)



prints

# Paper

## FRAMING PAPER

Paper prints are typically framed behind glass to protect the artwork. Paper prints are sold unframed as it's much cheaper and safer for you to frame them once they get to you!

Common options include:

- Standard frame – the print sits directly in the frame behind glass.
- Framed with a mat (mount) – a border around the artwork that adds space and a gallery-style look.
- Floating frame – the artwork appears to “float” within the frame with a small gap around it.

Framing paper prints gives you flexibility to match your interior style, from minimal modern frames to classic wood finishes.

**All prints will come with a white border.** See the next page for border sizes



Standard frame



Framed with mount



Floating frame

## WHO TO USE?

Standard frame : This one can be a bit more DIY! You can buy a frame online and simply place the print inside. Some good frames

- [Ikea](#)
- [Art photo limited](#) - Good for the rectangle ones
- [Custom Sizes](#) - Made to fit exactly

Frame with Mount:

- [Standard Mounts](#)
- [Custom mounts/matboards](#): This is really handy for the rectangle pieces as sometimes it's hard to find a frame that matches them. You can buy a cheaper frame with slightly too large measurements and create a custom mount to fit the piece perfectly. Here is a handy [video](#) to watch on mounting your print.

Float Mounts:

Take to any local framer and they will have lots of options!

# Borders

Borders

## PAPER - BORDERS

Paper Size (cm)	Print Size	Border (cm)
30 x 40	29 x 37	1 x 2
40 x 40	38 x 38	1 x 1
50 x 50	44 x 44	3 x 3
45 x 60	41.5 x 56	1.75 x 2
60 x 60	54 x 54	3 x 3
70 x 70	60 x 60	5 x 5
60 x 80	56 x 75	2 x 2.5
80 x 80	70 x 70	5 x 5
76 x 100	70 x 93	3 x 3.5
90 x 90	80 x 80	5 x 5

\*Borders may change slightly depending on the ratio of the original painting. This is more of a rough guide

## SQUARE

## RECTANGLE



Large Print



Small Print



Large Print

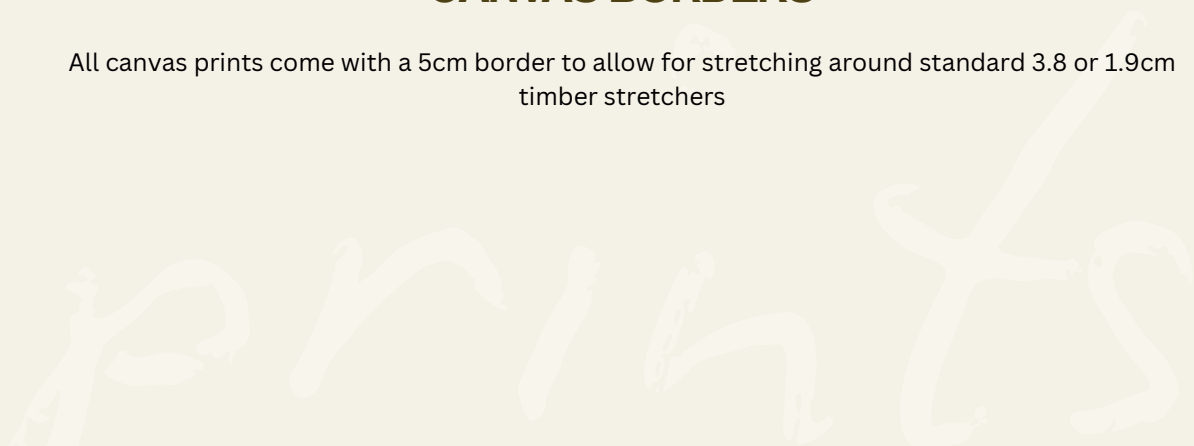


Small Print

Borders may change slightly depending on the ratio of the original painting

## CANVAS BORDERS

All canvas prints come with a 5cm border to allow for stretching around standard 3.8 or 1.9cm timber stretchers



# production

The nitty gritty

## WHAT WILL ARRIVE?

All prints are made to order through our trusted printing partners to ensure the highest quality reproduction.

### **Production time**

Please allow 2-3 weeks for your print to be produced before shipping. Each piece is carefully printed and inspected to ensure colour accuracy and quality.

### **Care Instructions**

- Unroll your print gently and allow it to relax flat before framing or stretching.
- Handle with clean hands and avoid touching the printed surface where possible.
- Keep the print away from direct sunlight, moisture, and extreme heat to maintain its longevity.
- Paper prints should be framed behind glass for protection.
- Canvas prints should be stretched by a professional framer or print shop before hanging.

prints

# limited editions

The special ones

## LIMITED EDITIONS VS OPEN EDITIONS

### LIMITED EDITIONS

Some prints are released as limited editions, meaning only a fixed number will ever be produced. Once the edition sells out, no more prints of that artwork will be made in that size and format. **All prints are released as limited editions of 20 per size.**

**When an edition reaches its limit, it is permanently retired.**

Each limited edition print is individually numbered and comes with a signed certificate of authenticity, confirming its place within the edition.

### OPEN EDITIONS

There is no fixed limit to how many prints can be produced meaning a **more accessible and affordable** print, while still maintaining the same high-quality printing and materials.

Unlike limited editions, open edition prints are not numbered, but they are produced with the **same care and attention to detail.**



prints